

57 George Roche Road
Canterbury
CT1 3FF

£975 PCM



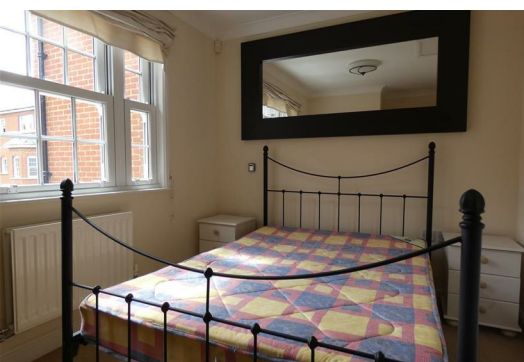
57 George Roche Road

Canterbury, CT1 3FF

£975 PCM

A well presented partly furnished one bedroom first floor apartment with its own private entrance, which is located close to the Kent & Canterbury Hospital and within easy walking distance of Canterbury City Centre. Accommodation comprises: entrance hall, stairs leading to first floor, open plan living room/kitchen which is fitted with most appliances, double bedroom with built in wardrobe, shower room with double sized shower cubicle. The property benefits from gas central heating and double glazing throughout. Outside there is one allocated parking space in a communal car park plus a lockable integral outside storage cupboard suitable for bike storage etc.

- * Part furnished
- * Available 1st October 2025
- * No children. No pets. Non-smokers.
- * Deposit £1,125



Open Plan Kitchen/Living Room 20'0" x 11'6" (6.10m" x 3.51m")

The lounge area has a fitted carpet, TV aerial point, Satellite point and BT telephone point. The kitchen area is fitted with built in washer/drier, dishwasher, fridge/freezer, oven with gas hob and extractor over. Vinyl flooring.

Bedroom 12'7" x 8'7" (3.84m" x 2.62m")

TV point. BT point. Built in double wardrobe with hanging rail and shelf over. Fitted carpet.

Shower Room

Comprising double size shower cubicle, WC, hand basin, extractor fan. Vinyl flooring.

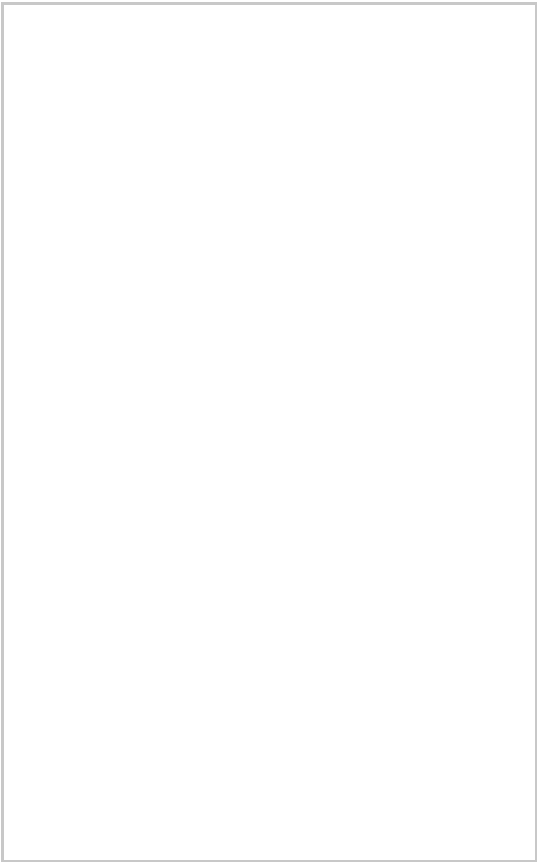
Outside

Allocated parking space for one vehicle. Lockable integral outside storage cupboard suitable for bike storage etc.

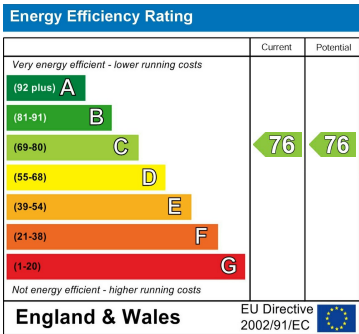
Area Map



Floor Plans



Energy Efficiency Graph



These particulars, whilst believed to be accurate are set out as a general outline only for guidance and do not constitute any part of an offer or contract. Intending purchasers should not rely on them as statements of representation of fact, but must satisfy themselves by inspection or otherwise as to their accuracy. No person in this firms employment has the authority to make or give any representation or warranty in respect of the property.

FINN'S CANTERBURY
82 Castle Street
Canterbury
Kent CT1 2QD
Sales: 01277 454111
Lettings: 01227 452111

FINN'S SANDWICH
2 Market Street
Sandwich
Kent CT13 9DA
Sales: 01304 612147
Lettings: 01304 614471

FINN'S ST NICHOLAS AT WADE
The Packhouse
Wantsum Way
St Nicholas at Wade
Kent CT7 0NE
01843 848320

